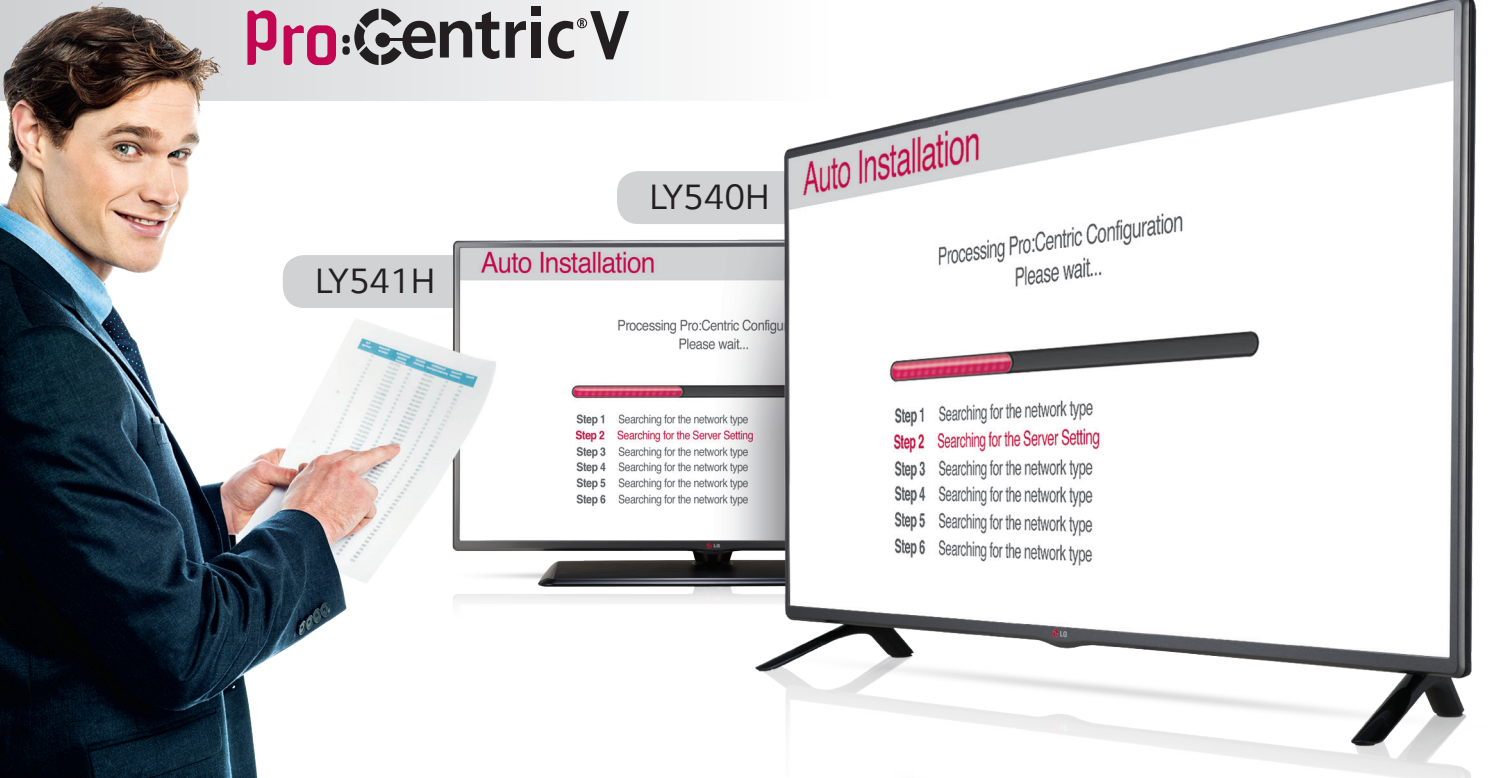


# Pro:Centric® V



## Self Diagnostics

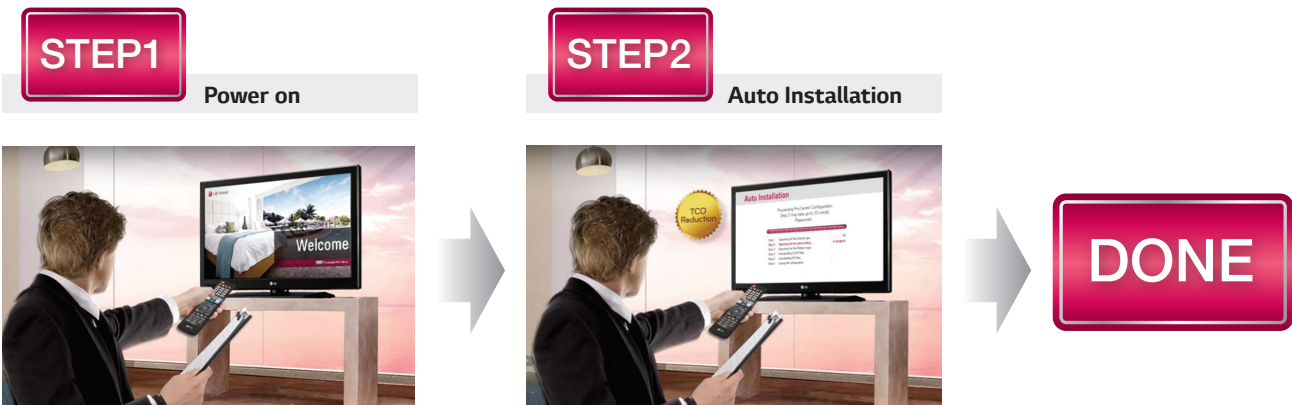
Self Diagnostics lets our partners to recognize issues easily and quickly without visiting the sites. LG provides APIs\* to partners so that engineers can check broadcasting signals, TV conditions, network status, and input/app. conditions.



\*APIs: Application Programming Interface

## EzManager

EzManager provides convenient installation function that will setup Pro:Centric TV settings automatically without extra effort of configuration. Auto-installation requires 1-3 minutes while manual installation requires 3-5 minutes.

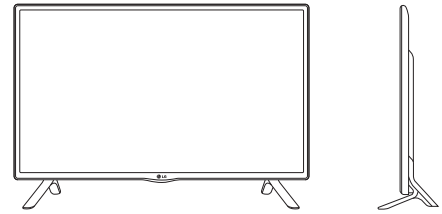


## Specification

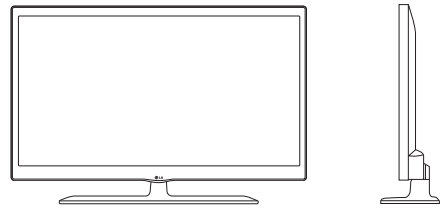
		MODEL NAME	LY540H (Asia)	LY541H (Asia)	
Model information	Size (Inch)		32H/42/47/55		
	Production Model		LY540H-TA	LY541H-TA	
Broadcasting	DTV		DVB-T2/T/C (Varied by region)		
	ATV		PAL/NTSC-M		
Video	Resolution		32" : 1366 x 768 (HD) 42/47/55" : 1920 x 1080 (FHD)		
Audio	Audio Output		10W+ 10W		
	Sound System		2.0 Ch		
Feature	Pro:Centric	Type	P:C V		
	Connectivity	Program Language (GEM/FLASH/HTML)	GEM/FLASH		
Management	Management	Remote diagnostics / Self diagnostics	• (Self diagnostics)		
		EzManager	•		
		HDMI-CEC	•		
		HTNG-CEC	•		
		Welcome Screen	•		
		Lock Mode	•		
		Multi IR Code	•		
		Hotel Mode / Publice Display Mode	•		
		USB Cloning	•		
		Others	Others	IR Out	•
USB Auto Play back	•				
External Power	•				
External Speaker Out	•				
RJP Compatibility	• (RS232C,HDMI)				
Anti-theft System	Anti-theft System	Swivel	-	• ± 20°	
		Kensington Lock		•	
		Credenza/Security Screw Hole	-	•	
Interface	Side	HDMI In		1	
		USB(2.0)		2	
		Headphone Out(3.5mm Phone Jack)		1	
	Rear	Rear	RF In		1
			AV In(Composite)	1 (Sharing with Component in)	
			Component In(Y, Pb,Pr) + Audio(L/R)		1
			Digital Audio Out(Optical)		1
			RGB In (D-sub 15pin)		1
			RS-232C(D-sub 9pin)		1
			HDMI In		1
LAN(RJ45)		1			
Ext SPK out (3.5mm Phone Jack)		2 (Spk-out 1, Vol. Control 1)			
Power	Power	Voltage, Hz	100 ~ 240V, 50/60Hz		
		Typical(Watts)	32" : 59W		
			42" : 92W		
			47" : 90W		
		Stand-by	55" : 115W		
			32" : 0.19W		
42" : 0.19W					
47" : 0.18W					
55" : 0.17W					
Standard Approval	Standard Approval	Safety	CB, BIS, SIRIM, TISI, BPS		
		Environment	CISPR		
		Etc.	MEPS, Tick, EE, CIF		

## Dimension

LY540H : 32" / 42" / 47" / 55"



LY541H : 32" / 42" / 47" / 55"



		LY540H	LY541H
Set (W/O Stand, WxHxD, mm)	32H"	732 x 431 x 55.5	
	42"	961 x 567 x 55.5	
	47"	1073 x 629 x 55.8	
	55"	1243 x 725 x 56.8	
Set (With Stand, WxHxD, mm) / Weight (With Stand, kg)	32H"	732 x 481 x 207 / 6.2	732 x 482 x 282 / 8.9
	42"	961 x 612 x 218 / 9.5	961 x 617 x 325 / 12.6
	47"	1073 x 676 x 247 / 12.7	1073 x 680 x 325 / 15.7
	55"	1243 x 772 x 247 / 17.7	1243 x 771 x 325 / 21.4
VESA Compatibility	•		

## Back Jack Panel

